

Instructions for Bic Sports Yakkair Inflation
Use in conjunction with Yakkair Image File Instruction Manual
Prepared by AirKayaks.com

Section I

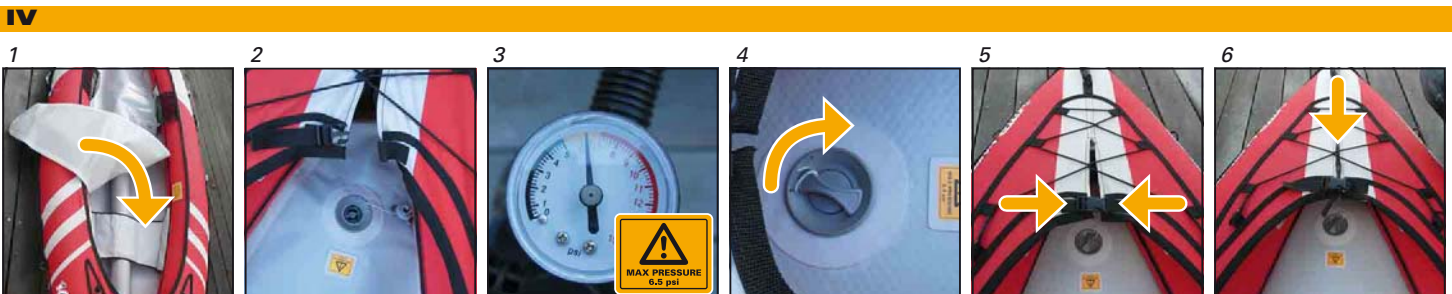
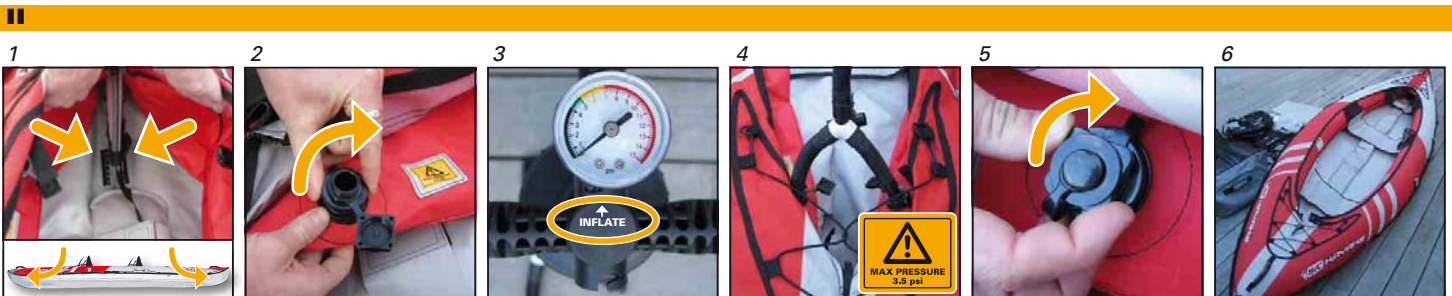
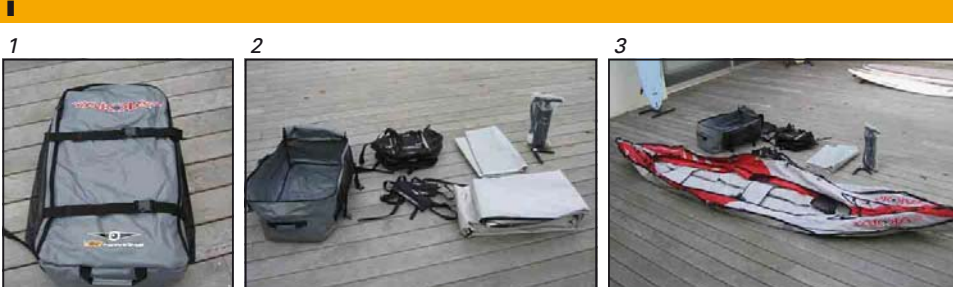
1. Unfold the kayak. (Images I:1-3)

Section II

2. Remove the two gray Boston valves from the mesh pocket inside the backpack. These are two-part screw-on valves with a circular ring tether.
3. Unzip the rear of the kayak, and you will see the two bladder openings inside. (Image II:1)
4. Check the two “ribs” in the bow and stern (these run perpendicular to the kayak) to make sure they are standing up straight and are centered.
5. Push/pull the circular ring tether over the screw valve opening (this is tough, might take two people). This keeps the Boston valve from being lost by attaching it to the kayak.
6. Carefully screw the bottom half of the Boston valves firmly onto each side of the kayak, making sure that it is not cross-threaded. (Image II: 2)
7. Screw open the top half of each Boston valve.
8. Attach the pressure gauge to the hand pump. (Image II: 3)
9. Remove the octopus adaptor from the mesh pocket in the backpack, and attach to the end of the hand pump hose.
10. Fit the nozzle fittings into each top half of the Boston valve. This allows both sides to be pumped up simultaneously and evenly. Inflate until it reaches approximately 3.5 PSI. During this time, keep checking the “ribs” to make sure they stay straight and centered. (Image II: 4)
11. Remove the nozzle fittings from the Boston valve, and screw the top caps in place. (Image II: 5)
12. Remove the octopus adaptor from the hand pump hose and put back in mesh pocket.

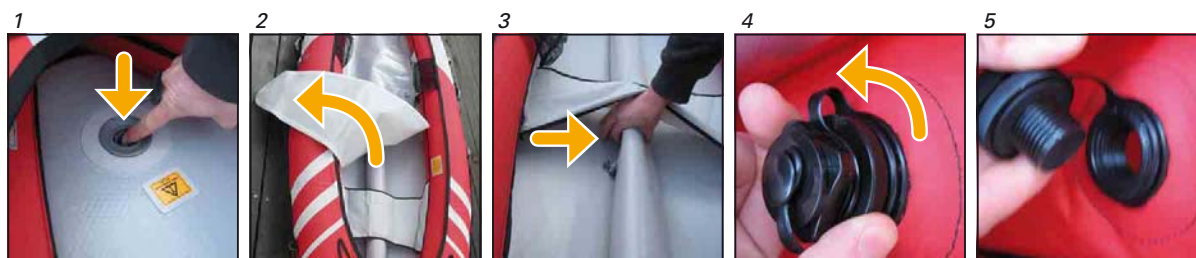
Section III

13. Take the military valve adaptor from the mesh pocket and attach to the end of the hand pump hose. (Suggestion - get some filament thread and attach the adaptor to the end of the hand pump hose, there are two small holes on each piece to allow this, and ensure that you don't misplace the adaptor.) (Image III: 2)
14. The spring loaded military valves work as follows - using your finger, push in and turn counter-clockwise. This puts the valve in the deflate mode, and air can escape. Turn the valve spring clockwise and the valves pushes out. This puts the valve in the inflate mode, where air will not escape when you remove the adaptor. (Image III: 3)
15. There are two military valves - one on the long keel running the length of the floor, and one on the floor cushion.
16. Locate the keel valve. Lock the military valve adaptor onto the keel military valve, in the “inflate mode” (pin is out). The adaptor locks onto the valve, and pushes in the pin to allow air to enter the chamber. Pump up to 6.5PSI. Carefully remove the valve adaptor from the valve, the pin pops back up so air does not escape. Screw on the cover cap. As you are pumping up the keel, make sure it stays straight. You might need to reposition it to keep it centered (you can do this by readjusting the velcro straps). (Image III: 4-6)





VI



VII



VIII



IX



www.bicsportkayaks.com