



WALKER BAY

OWNER'S SAFETY MANUAL

AIRISTM

***PLAY
SPORT***

Patent Pending

TABLE OF CONTENTS

Introduction	2
Important Notice	2
Declaration of Conformity	3
Boating Safety Signs & Symbols	4
Operator Instructions	5
Navigation	6
Airis™ Kayak Features	7
Specifications & Capacities	8
Materials	8
Assembly, Inflation and Deflation	9
Cleaning	11
Storage	11
Transportation and Towing	11
Repairs	12
Safety Equipment	13
Accident Reporting	13
Troubleshooting	13
Limited Warranty	14

INTRODUCTION

For over 10 years, Walker Bay® has been on the leading edge of design and technology in recreational water products. With over half a dozen awards for product design and innovation, Walker Bay continues to raise the bar in performance and fun on the water.

New and innovative, Walker Bay's line of Airis™ Kayaks are the lightest, most compact high-pressure inflatable kayaks in the world. Providing rigidity and durability through AirWeb™ High Pressure Construction, Airis™ Kayaks are tear and abrasion resistant, quick to inflate, simple to use and so portable, you can throw one on your back and take it with you wherever you go (custom designed AirPack™ Backpack included).

Whether you travel by bus, car, or bike, toss an Airis™ Kayak on your back and you are ready to launch; the perfect kayak for your next camping, RV'ing, or boating trip. Getting on the water has never been easier.

IMPORTANT NOTICE

Read this Owner's Safety Manual carefully before using your kayak. After reading this manual, store it in a safe place for future reference. If you transfer ownership of your kayak give this manual to the new owner.

DECLARATION OF CONFORMITY

International standards to which conformity is declared:
International Organization for Standardization, ISO: 6185-1
American Boat and Yacht Council, ABYC: H-28
National Marine Manufacturers Association, NMMA: H-28

CERTIFYING BODY



United States of America
National Marine Manufacturers Assn.
Suite 5100-200 E. Randolph Dr.
Chicago, IL 60601-6528, USA
Tel: 1 (312) 946-6214
Fax: 1 (312) 946-0388

MANUFACTURER

Walker Bay Boats Inc.
717 Butterfield Rd,
Yakima, WA 98901, USA
Tel: 1 (888) 44WALKER (449-2553) or 1 (604) 682-5699
Fax: 1 (888) 228-7222 or 1 (604) 683-1877
email: info@airiskayaks.com

TYPE OF EQUIPMENT: Kayak

HIN / CIN (Found on craft): US-EWV_____

IMPORTER

®Walker Bay is a registered trade mark and/or service mark of
Walker Bay Boats Inc. All rights reserved.

BOATING SAFETY SIGNS AND SYMBOLS



This is the safety alert symbol. It is used to alert you to potential personal injury hazards. Obey all safety messages that follow this symbol to avoid possible injury or death.



DANGER

Indicates an imminently hazardous situation which, if not avoided, will result in death or serious injury or substantial property damage.



WARNING

Indicates an imminently hazardous situation which, if not avoided, could result in death or serious injury or property damage.



CAUTION

Indicates an imminently hazardous situation which, if not avoided, may result in property damage.

CAUTION

Used without the safety alert symbol indicates a potentially hazardous situation, which, if not avoided, may result in property damage.

NOTICE

Indicates installation, operation or maintenance information which is important but not hazard related.

OPERATOR INSTRUCTIONS & NAVIGATION



WARNING

Risk of serious injury or death from drowning.

Paddle sports can be very dangerous and physically demanding.

The user of this product acknowledges and understands an assumption of the risks involved in paddle sports.

Observe the following safety standards and safe operating practices whenever using this product.

- Read this owner's safety manual prior to using this product.
- Always wear a coast guard approved personal flotation device.
- Do not exceed maximum weight capacity. Regardless of number of persons on board, total weight of persons and equipment must not exceed maximum weight capacity.
- Do not operate the kayak under the influence of drugs or alcohol or any other impairment or disability.
- Wear a helmet where appropriate.
- Do not paddle alone.
- Children must be supervised by a responsible adult at all times.
- Dress appropriately for weather and marine conditions; cold water and/or weather can result in hypothermia.
- Beware of offshore winds and currents, they could take you out to sea.
- Check weather forecasts and obtain local knowledge of marine environment and weather conditions prior to your voyage.
- Do not exceed your paddling ability; be aware of your limitations.



CAUTION

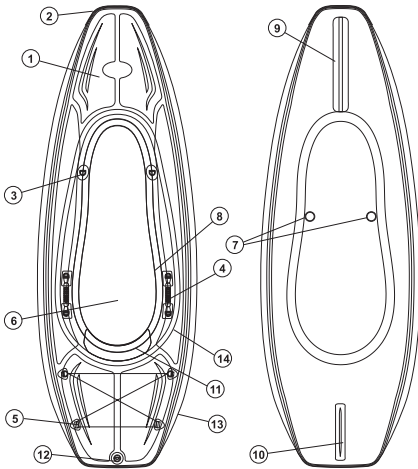
- Obtain paddle sports instructions specific to this type of craft. Proper instruction will make your paddling experience safer and more enjoyable (Information on paddling can be obtained from your dealer or from the American Canoe Association at WWW.AMERICANCANOE.ORG).
- Consult your physician prior to beginning your paddle sports training.
- Obtain certified first aid and CPR training, and carry appropriate first aid, rescue and safety equipment (see SAFETY EQUIPMENT).
- Be aware of appropriate river water levels, tidal changes, currents, and obstacles in and above the water.
- Check your equipment prior to each use for signs of wear, leaks or failure.
- Tie a leash to your paddle when appropriate.
- Always inform someone of your paddling route, the time and location of your departure and your intended time and location of arrival.
- Always carry identification.
- Do not paddle in flood conditions.
- Make sure you are able to exit the craft if necessary.
- Scout unfamiliar waters; portage where appropriate.



CAUTION

- Carry, read, and understand navigation charts when appropriate.
- Observe right-of-way as defined by "Rules of the Road" and required by COLREGS.
- Obey signs for restricted areas designated for swimming, bathing or other forms of recreation.
- Learn to control your craft and know the limitations of your capabilities and the capabilities of your craft. If necessary take a paddling course to learn these limitations.
- Inform someone of your Float Plan including time and place of departure, proposed route and expected time of return.

AIRIS PLAY



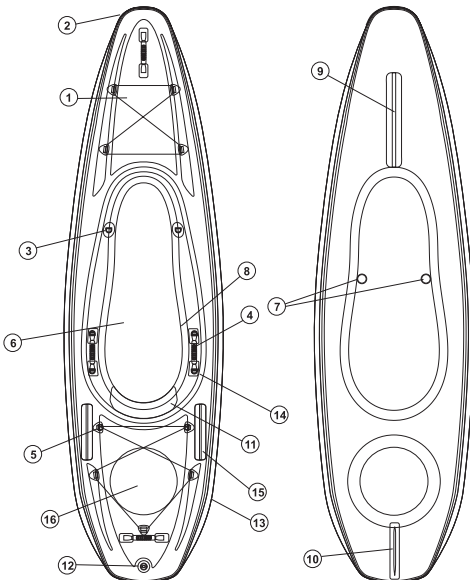
FEATURES

- 1) Hi-Pressure AirWeb™ hull & floor
- 2) Bow bumper rail
- 3) Four D-rings for attaching accessories
- 4) Two molded carrying handles
- 5) Storage bungee
- 6) Hi-Pressure Airweb floor w. EVA seat pad and H3 valve
- 7) Two drain valves
- 8) Two cup holders
- 9) Bow keel
- 10) Rear skeg for excellent tracking
- 11) Adjustable back rest
- 12) H3 valve
- 13) Airweb window
- 14) Splash guard

Not Shown

AirPack™ deluxe portaging backpack
Hi-pressure air pump with gauge
Repair kit

AIRIS SPORT





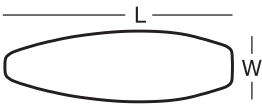
FEATURES

- 1) Hi-Pressure AirWeb™ hull & floor
- 2) Bow bumper rail
- 3) Four D-Rings for attaching accessories
- 4) Four molded carrying handles
- 5) Two storage bungees
- 6) Hi-Pressure Airweb floor w. EVA seat pad and H3 valve
- 7) Two drain valves
- 8) Two cup holders
- 9) Bow keel
- 10) Rear skeg for excellent tracking
- 11) Adjustable back rest
- 12) H3 valve
- 13) Airweb window
- 14) Splash guard
- 15) Two accessory attachment rails
- 16) Integrated dry bag

Not Shown

AirPack™ deluxe portaging backpack
Hi-pressure air pump with gauge
Repair kit

SPECIFICATIONS AND CAPACITIES*

MODEL	ISO / ABYC											
		LB	KG		LB	KG	L		W			
							IN	CM	IN	CM		
Play 8	6185-1, TYPE III, B / H 28	225	102	1	15	7	100	244	33	84		
Play 9.5	6185-1, TYPE III, B / H 28	250	113	1	18	8	108	275	33	84		
Sport 10	6185-1, TYPE III, B / H 28	250	113	1	20	9	120	305	33	84		
Sport 11	6185-1, TYPE III, B / H 28	250	113	1	21	9,5	132	335	33	84		

*Specifications and capacities subject to change without notice.



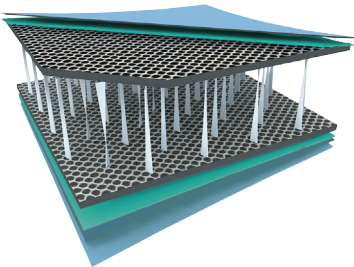
WARNING

Do not exceed the stated maximum capacities under any circumstances. Overloading will reduce freeboard and increase the likelihood of swamping, especially in heavy seas. Overloading causes handling to become sluggish, making it difficult to react quickly.

MATERIALS

AirWeb™

Airis™ Inflatable Kayaks are made using AirWeb™ High Pressure Construction, formed from a heavy duty, 7 layer polymer coated fabric that is joined inside by thousands of drop-stitch fibers. AirWeb™ makes it possible to inflate Airis™ Kayaks to more than 6 PSI or 0.42 bar, up to 6 times the maximum air pressure of other inflatable kayaks! This creates a hull that is incredibly rigid and durable without the use of aluminum inserts or other complicated frame parts, and keeps the assembly of Airis™ Kayaks quick and simple.



ASSEMBLY, INFLATION AND DEFLATION

ASSEMBLY

Your kayak requires very little assembly. All you have to do is ensure that the kayak floor and back rest are correctly positioned in the kayak cockpit prior to inflation of the kayak floor.

OPERATING THE PUMP

The pump included with your kayak has been chosen specifically for its ability to quickly inflate your Airis™ kayak to the high pressure required.

The pump included with your kayak is equipped with a pressure gauge. The pressure gauge will only display pressure while you are inflating. The pressure reading will subside when you stop pumping.

The pump can be used for inflating and deflating. For inflation mode attach the fitting on the pump hose to the fitting on the pump handle marked "Inflate". For deflation mode attach the fitting on the pump hose to the fitting on the pump handle marked "Deflate".



CAUTION

Do not force the handle on the pump, it could break.

Use both hands to operate the pump; position one hand on each side of the pump handle. Pump by moving the handle in a vertical upwards and downwards motion. Do not push unevenly on the handle; this could break the shaft of the pump.

NOTICE

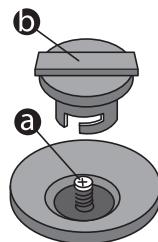
If you prefer to use an aftermarket foot pump or an electric pump choose one capable of inflating to at least 6.5PSI/0.45Bar.

OPERATION OF VALVES

For inflation remove the valve cap (b), then push, twist and release the center valve stem (a) so it is in the "OUT" position. After inflating install the valve cap (b) by inserting it and twisting clockwise.

For deflation remove the valve cap, then push, twist and release the center valve stem so it is in the "IN" position.

After deflating replace the valve cap to protect the valve's parts and mechanism.



INFLATION



CAUTION

Failure to follow inflation instructions may result in poor performance or damage to the kayak.

For optimum performance it is essential that the kayak is inflated to the correct working pressure of 6.5psi/0.45bar.

The kayak body should be rigid and very firm when inflated to the correct working pressure.

Do not under inflate. Under-inflation will result in poor performance.

Do not over inflate. Over inflation may cause air chambers to rupture.

Avoid leaving the kayak in direct sunlight when inflated to working pressure. This could cause an increase in air pressure beyond the kayaks maximum air pressure and cause air chambers to rupture.

Do not use compressors, CO2 or compressed air; these may damage your kayak.

CORRECT WORKING PRESSURE: 6.5PSI/0.45BAR.

MAXIMUM PRESSURE: 7PSI/0.49BAR.

MINIMUM PRESSURE: 6PSI/0.42BAR

Inflating the kayak body

1. Before inflating the kayak body set the valve stem in the closed/out position by pushing, turning counter clockwise and releasing. This will prevent air from escaping when you remove the pump hose once inflation is complete.
2. Insert the fitting on the end of the pump hose into the valve and twist the fitting clockwise to secure it for inflation.
3. Inflate the kayak body to correct working pressure (6.5psi/0.45bar) using the pump provided with your kayak.

NOTICE

Many pumps are not capable of high pressure inflation greater than 5psi/0.35bar. If/when not using the pump provided with the kayak you must use a high pressure pump or a pump capable of achieving at least 6.5psi/0.45bar).

4. Use the gauge mounted in the pump to determine the air pressure in the kayak. To release air push the valve stem in. (Notice: The gauge on the pump only shows the air pressure in the kayak when you are actively pumping).
5. Remove the pump hose and fitting from the inflation valve.
6. Seal the valve with the valve cap.

Installing the back rest

Before inflating the kayak floor install the back rest.

To install the back rest, position the bottom flap of the back rest under the inflatable floor. When the floor is inflated it will secure the lower portion of the back rest.

Pass the webbing straps on the back rest through the rear D-rings on kayak's handles. Feed the webbing straps through the buckles on the back rest.

When the floor is completely inflated use the webbing straps to adjust the back rest to a comfortable position.

Inflating the kayak floor

7. Position the kayak floor in the cockpit of the kayak body before you inflate the kayak floor.
8. To inflate the kayak floor repeat steps 1 through 6 with the kayak floor.
9. Make sure both valves are tightly secured.

Deflating the kayak body and kayak floor

1. To deflate the kayak, remove the valve cap from the valves in the kayak floor and kayak body.
2. Release the air by pushing the valve stem in and turning clockwise. The valve should lock in the depressed position allowing the kayak to deflate completely.
3. Completely deflate the kayak body and floor either by rolling the kayak from the front/bow to the rear/stern or by using the pump by switching the pump from inflate mode to deflate mode.
4. Replace the valve caps on the kayak body and floor once they are completely deflated. This will protect the valves when the kayak is not in use.

CLEANING

After use, rinse with fresh water; wash away sand and debris.
Rinse the cockpit and under the inflatable floor to remove sand and debris.

NOTICE

Do not clean with oily or abrasive substances or chemicals.
Do not use products that could be harmful to PVC.
Do not discharge cleaning products or chemicals into waterways.
Some suntan lotions can discolor PVC fabric.

STORAGE

Clean kayak before storing.
Dry kayak before storing to prevent accumulation of mould.
Store in a cool and dry place.

NOTICE

Do not store kayak in a place where it may come in contact with sharp or abrasive objects.

TRANSPORTATION & TOWING

To transport with an automobile deflate the kayak and transport it inside the trunk or boot of the automobile.



CAUTION

Do not transport kayak on an automobile roof rack. This could result in damage to the kayak or a hazardous driving situation.

Do not tow behind a boat. This craft is not designed for towing behind a boat. Towing behind a boat could result in injury or damage to the craft.

REPAIRS

For repairs, parts, or service contact your local AIRIS™ dealer or Walker Bay® customer service at:

Tel: 1 (888) 44WALKER (449-2553) or 1 (604) 682-5699

Fax: 1 (888) 228-7222 or 1 (604) 683-1877

email: info@airiskayaks.com

SMALL TEARS, CUTS, PUNCTURES

Tears, leaks, or punctures less than 0.5 inches or 1cm can be repaired with the repair kit provided.

1. Prepare a round patch no less than 3 inches or 7 centimeters in diameter.
2. Clean the patch and the area surrounding the leak with Isopropyl Alcohol.

NOTICE

The patch and kayak skin must be clean or the patch may not adhere properly.

3. To contain excess glue, use masking tape to tape off the area around the patch. Excess glue will discolor.
4. Apply 3 thin, even coats of repair kit adhesive to both the surface of the kayak and the patch. Wait 5 minutes between each coat.
5. After the 3rd coat, wait 10-15 minutes before applying the patch. Use a hand roller to apply the patch evenly. Pay special attention to the edges.
6. Wait 24 hours before re-inflating. Inflate to working pressure and check water-tightness and/or air-tightness before using.

FINDING SMALL LEAKS

1. Mix a solution of 4 cups of fresh water and 1 cup of mild non-antibacterial liquid soap. Do not use a spray bottle containing household cleaners.
2. Inflate kayak approximately to working pressure.
3. Spray the soapy solution over suspected area of leak.
4. Look for air bubbles. Bubbles around an air valve indicate it is probably loose. Use the tool included in the repair kit and gently tighten valve. Bubbles on the surface of the kayak skin indicate a puncture or leak.
5. Repair the kayak by following the procedure for SMALL TEARS, CUTS, PUNCTURES or contact Walker Bay® customer service.

LARGE REPAIRS TO SKIN - SEAMS



CAUTION

For large tears or repairs to seams it is recommended that the kayak be returned to Walker Bay® or your dealer for repair by a trained professional. Contact Walker Bay® Customer Service for Return Authorization, Repair Service and Freight Rates.

SAFETY EQUIPMENT*

- Coast Guard approved lifejacket or personal flotation device**
- Charts
- Protective clothing in case of weather change
- Flares
- Whistle
- First Aid kit
- Mobile phone
- Tow line
- Repair kit
- Pump
- Paddle leash
- Water & food
- Spare paddle

*NOTICE

Specific safety equipment may be mandatory in some countries. Failure to carry safety equipment could result in fines or other penalties. Familiarize yourself with safety equipment and emergency maneuvering (re-boarding etc.).

**NOTICE

Wear a Coast Guard approved personal flotation device. In some countries, it is a legal requirement to wear an approved personal flotation device.

ACCIDENT REPORTING (USA)

Obtain knowledge of accident reporting requirements for the United States Coast Guard. Copies of the U.S. Coast Guard Boating Accident Report are available by calling the U.S. Coast Guard Boating Safety Hotline at 1 (800) 368-5647.

TROUBLESHOOTING

PROBLEM	POSSIBLE CAUSE	SOLUTION
Air chamber loses air:	- Tube valve is loose.	- Tighten valve.
	- There is a leak.	- Repair leak.
Kayak not rigid enough:	- Air pressure is too low.	- Increase air pressure.
Kayak is difficult to paddle:	- Kayak is under inflated.	- Increase air pressure.
	- There is too much load.	- Reduce load.
Water accumulates in cockpit:	- Drain plug is open.	- Close drain plug.

WALKER BAY® BOATS NORTH AMERICAN LIMITED WARRANTY FOR AIRIS™ KAYAKS

(For export markets please contact the distributor for your country – see
www.walkerbay.com for distributor listing)

Attorneys can turn valuable Warranty Information into a document that is hard to understand. The following is an explanation of the Walker Bay AIRIS™ Limited Warranty in simple terms.

To be covered under the Walker Bay Limited Warranty, you must register your craft with Walker Bay within 30 days of purchase. Warranty Registration can be submitted by you or your Dealer:

- via mail using the Warranty Registration Card included with your Owner's Safety Manual
- online at www.walkerbay.com

Warranty registration extends the limited warranty on your AIRWEB™ hull from one year to a total of two years.

Registration also enables us to contact you should there be a recall or service notice. If you do not register, Warranty coverage is limited to one year. Warranty coverage is for defects in materials and workmanship, not from damage that occurs in shipping or from usage. In the event of damage not covered under warranty, consult your insurance carrier.

AIRIS™ high pressure kayaks are covered by the Walker Bay Limited Warranty under two categories:

- AIRIS™ AIRWEB™ HIGH PRESSURE HULL MATERIAL
- ACCESSORIES

1. AIRIS™ AIRWEB™ HIGH PRESSURE HULL MATERIAL

For determining air retention and servicability Walker Bay follows the ABYC (American Boat & Yacht Council) standard H-28 and ISO (International Standards Organization) standard 6185.

AIRWEB Limited 2 Year Warranty covers:

- Air retention
- Structural integrity of the tube
- Servicability
- Seams and gluing

The AIRWEB material warranty does not cover:

- Damage from bumping or scraping against something
- Damage from hitting objects above or below the water
- Damage from over inflation or exposure to excessive heat, changes in air pressure and altitude
- Damage from alien attack, or deep sea monsters

2. ACCESSORIES - 1 YEAR LIMITED WARRANTY

An accessory is defined as something that can be added or removed from the craft, such as a backrest, pump, floor, D-rings, handles, valves, etc. For these items we offer a one year limited warranty for defects in materials and workmanship.

Getting Service

It is recommended that you return to your selling dealer for service. It is the sole responsibility of the customer to get the craft to a Walker Bay AIRIS™ dealer for service. Walker Bay will not cover the cost of transportation to the dealer.

Walker Bay decides whether to repair or replace a part.

In the event of a possible Warranty Claim, have your kayak examined by your dealer. Your dealer will facilitate the Warranty Claim process with Walker Bay. Walker Bay endeavors to handle all issues in an expedient manner, so you can get back on the water.

What is not covered

The Walker Bay AIRIS™ Limited Warranty, covers defects in materials and workmanship. This means that when you take delivery, that all the parts fit and are in proper condition and that they will continue to fit and operate as per their intended design as long as they are not damaged by an outside force.

Walker Bay AIRIS™ kayaks are designed and built for recreational purposes. They are not commercial products, so using them for that purpose means they won't be covered under our warranty.

The warranty does not cover the effects of ultraviolet light, fire, fall out, acid rain, hurricanes, tornados and other extreme forces of nature.

The same is true for damage related to accidents or vandalism or abuse. Everything ages and normal aging is **not** something covered under a warranty. With age comes fading, discoloring and the need for a little more maintenance - none of which is covered under warranty. Like anything in life, the better you take care of it the longer it will last. A little TLC goes a long way. Sheltering the craft from the sun and heat when not in use is always recommended. Keep the kayak away from sharp objects that could cause damage.

We hope that your Walker Bay AIRIS™ kayak will provide you with many years of enjoyment. If you have any questions, contact your local dealer or Walker Bay Customer Service at 1-888-449-2553 or 1-604-682-5699.



WALKER BAY

WALKER BAY USA

T: 888-449-2553 / 604-682-5699 F: 888-228 7222 / 604-683-1877

E: info@walkerbay.com W: www.walkerbay.com

A: 717 Butterfield Road, Yakima, Washington, 98901, USA