



# AIRFUSION<sup>TM</sup> INFLATABLE KAYAK

OWNER'S MANUAL  
MODEL AE1040-Y

PATENT PENDING



1 PERSON KAYAK



## IMPORTANT!

PLEASE READ THIS MANUAL CAREFULLY BEFORE PROCEEDING. AFTER READING THIS MANUAL, SAVE THESE INSTRUCTIONS FOR FUTURE REFERENCE.



INFLATABLE KAYAKS WITH CUTTING  
EDGE TECHNOLOGY

## INTRODUCTION

---

It is our goal, at Advanced Elements, to develop new and unique paddlesports products that enhance our customers' outdoor experience. Our focus is on designing and manufacturing "Inflatable kayaks with cutting edge technology". Our kayaks incorporate many different materials and components and deliver high performance at a very reasonable price. We are the makers of the AdvancedFrame™ Inflatable kayaks, Lagoon™ Inflatable kayaks and StraitEdge™ Canoe and Kayaks. The AdvancedFrame™ Kayaks are a hybrid of a folding frame kayak and an inflatable kayak. Its bow slices through water like a knife and rivals the tracking of hard-shell kayaks. The stern acts as a skeg increasing the tracking performance. The Lagoon™ kayaks are durable and lightweight. They have built-in rigid forms that increase the performance once it is fully inflated. You can take our inflatables with you anywhere in the world and no roof rack is needed! Keep it in the trunk of your car and paddle whenever you want or pack it into a remote wilderness area and paddle where no one has paddled before. Simply inflate with a foot pump and hit the water in minutes. Please visit our website for more information on our products or to find a dealer near you.



## TABLE OF CONTENTS

---

1. Caution/Safety .....	4
1.1 Boating Safety.....	5
2. Specification.....	6
2.1 Capacity .....	6
2.2 Features .....	6
3. Assembly/Inflating/Deflation Instruction .....	7
3.1 Assembly .....	7
3.2 Set Up .....	9
3.3 Understanding Your Valves.....	14
3.4 Inflating.....	15
3.5 Deflation and Break Down.....	16
3.6 Folding .....	17
4. Guidelines for Usage .....	18
5. Proper Care and Storage .....	18
6. Repairs.....	19
6.1 Repairing Small Punctures and Cuts.....	19
6.2 Repairing Pinholes .....	19
7. Troubleshooting.....	20
8. Statement of Origin .....	25
9. Declaration of Conformity .....	26
10. Warranty and Registration.....	27

## 1. CAUTION - SAFETY WARNING

Users of this product agree by their use to accept the inherent risks involved in this paddlesports activity and agree to follow all instructions, cautions, and warnings carefully before using this Kayak.

(PLEASE READ CAUTION STATEMENT CAREFULLY)



### CAUTION

#### SAFETY WARNING

PADDLESPTS CAN BE VERY DANGEROUS AND PHYSICALLY DEMANDING. THE USER OF THIS PRODUCT SHOULD UNDERSTAND THAT PARTICIPATION IN PADDLESPTS MAY INVOLVE SERIOUS INJURY OR DEATH. OBSERVE THE FOLLOWING SAFETY STANDARDS WHENEVER USING THIS PRODUCT.

- GET PADDLESPTS INSTRUCTIONS SPECIFIC TO THIS TYPE OF CRAFT.
- OBTAIN CERTIFIED FIRST AID TRAINING AND CARRY FIRST AID AND RESCUE/SAFETY EQUIPMENT.
- ALWAYS WEAR A NATIONALLY APPROVED PERSONAL FLOTATION DEVICE.
- ALWAYS WEAR A HELMET WHERE APPROPRIATE.
- DRESS APPROPRIATELY FOR WEATHER CONDITIONS; COLD WATER AND/OR COLD WEATHER CAN RESULT IN HYPOTHERMIA. CHECK YOUR EQUIPMENT PRIOR TO EACH USE FOR SIGNS OF WEAR OR FAILURE.
- NEVER PADDLE ALONE.
- DO NOT PADDLE IN FLOOD CONDITIONS.
- BE AWARE OF APPROPRIATE RIVER WATER LEVELS, TIDAL CHANGES, DANGEROUS CURRENTS, WEATHER CHANGES, AND STRONG OFF SHORE WINDS.
- SCOUT UNFAMILIAR WATER; PORTAGE WHERE APPROPRIATE.
- DO NOT EXCEED YOUR PADDLING ABILITY; BE HONEST WITH YOURSELF.
- CONSULT YOUR PHYSICIAN PRIOR TO BEGINNING YOUR PADDLESPTS TRAINING.
- YOU MUST NOT USE ALCOHOL OR MIND ALTERING DRUGS PRIOR TO USING THIS PRODUCT.
- FOLLOW THE MANUFACTURER'S RECOMMENDATIONS FOR THE USE OF THIS PRODUCT.
- IF ADDITIONAL OUTFITTING IS REQUIRED, USE MANUFACTURER'S APPROVED MATERIALS ONLY; DO NOT IMPAIR ENTRY OR EXIT ACCESS.
- READ OWNER'S INFORMATION PACKET PRIOR TO USING THIS PRODUCT.

THE USER OF THIS PRODUCT ACKNOWLEDGES BOTH AN UNDERSTANDING AND AN ASSUMPTION OF THE RISK INVOLVED IN PADDLESPTS.

**ADVANCED ELEMENTS, INC.**

**TOLL FREE 866-262-9076**

Please read this entire manual for additional safety information. Please pay close attention to items marked **DANGER, WARNING, CAUTION, IMPORTANT, NOTICE, NEVER, and ALWAYS.**

## 1.1 Boating Safety



This is the safety alert symbol. It is used to alert you to potential personal injury hazards. Obey all safety messages that follow this symbol to avoid possible injury or death.

<b>! DANGER !</b>	Indicates an imminently hazardous situation which, if not avoided, will result in death or serious injury or substantial property damage.
<b>! WARNING</b>	Indicates a potentially hazardous situation which, if not avoided, could result in death or serious injury or property damage.
<b>! CAUTION</b>	Indicates a potentially hazardous situation which, if not avoided, may result in property damage.
<b>CAUTION</b>	Used without the safety alert symbol indicates a potentially hazardous situation, which, if not avoided, may result in property damage.
<b>NOTICE</b>	Indicates installation, operation or maintenance information which is important but not hazard-related.

The precautions listed in this manual and on the craft are not all-inclusive. If a procedure, method, tool or part is not specifically recommended, you must satisfy yourself that it is safe for you and others, and that the craft will not be damaged or made unsafe as a result of your decision. REMEMBER - always use common sense when paddling YOUR KAYAK!

## 2. SPECIFICATION

### Dimensions:

Length: 13'

Width: 25"

Weight: 32 lbs (15 kg)

Max. Person Capacity: 235 lbs (107 kg)

Max. Persons & Gear Capacity: 235 lbs (107 kg)

### Recommended Pressure:

Main chambers: 4.5 psi (0.31 bar)

Thwart chambers: 2.0 psi (0.14 bar)



## 2.1 Capacity

The person/load capacity is determined by the availability of proper seating on the kayak. Acceptable seating determines the number of passengers, not the overall load capacity.



AirFusion™ Kayak Capacity Label

**⚠ WARNING:** Do not exceed the certified maximum capacities under any circumstances. Overloading will reduce freeboard and increase the likelihood of swamping, especially in heavy seas. Overloading causes handling to become sluggish, making it difficult to react quickly.

## 2.2 Features

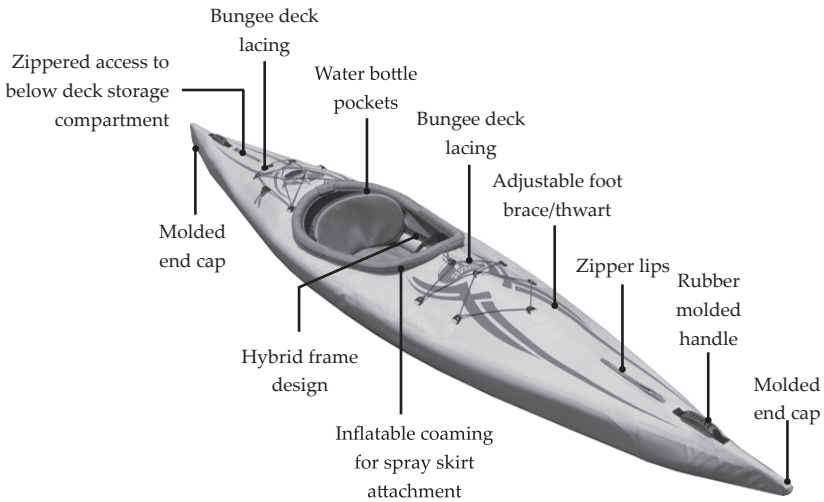
*Performance:* Aluminum frame and high pressure air chambers provide a hull speed comparable to a hard-shell.

*Quick set up:* Compared to Frame and Skin Kayaks, high pressure air chambers reduce frame parts for faster set-up time.

*Durable:* Heavy-duty PVC Tarpaulin material for extreme puncture resistance.

*Style:* Because of the narrow beam, it paddles like a rigid hard-shell kayak.

*Portability:* No roof rack needed! Pack in the trunk of your car or fly it to remote destinations.



### 3. ASSEMBLY/INFLATING/DEFLATION INSTRUCTION

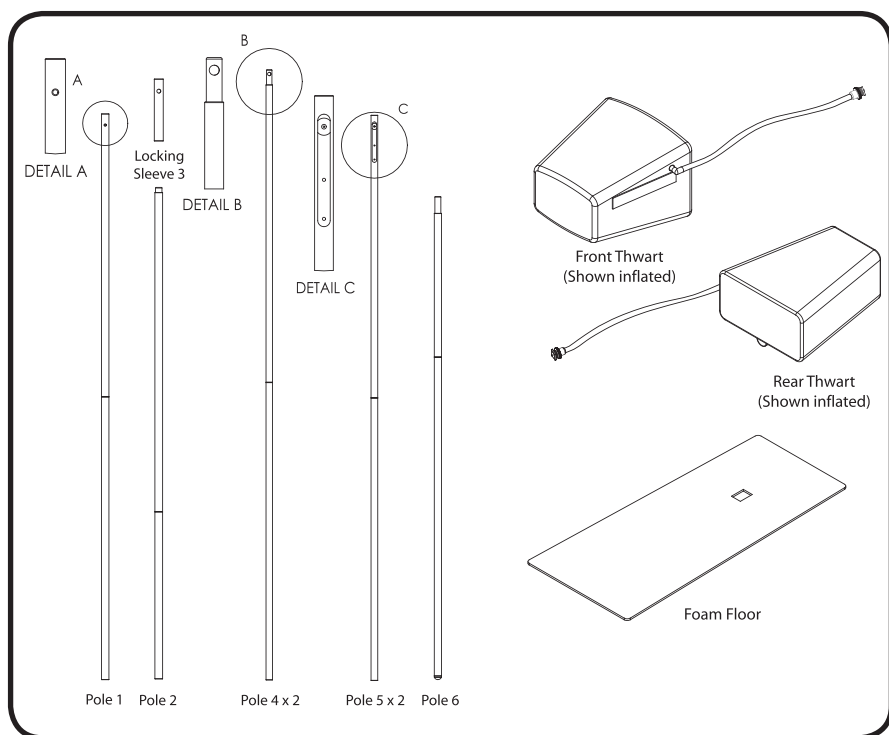
#### 3.1 Assembly

Your kayak comes from the factory pre-assembled with the Bow and Stern Ribs, and Main Inflation Chambers in place.

The rest of the kayak components will be with the kayak, but not installed; these include:

1. Front and rear inflatable thwarts: 1 each.
2. Foam Floor x 1
3. Seat x 1
4. Pole #1 x 1
5. Pole #2 x 1
6. Locking Sleeve #3 x 1
7. Pole #4 x 2
8. Pole #5 x 2
9. Pole #6 x 1

See Figure 1.



*Figure 1*

1. Your AirFusion kayak comes direct from the factory with the Bow and Stern Ribs, as well as the main inflation tubes already installed. However, should you take your kayak apart, you will need to place the Bow and Stern Ribs into each end of the kayak and secure the bottom of them into place using the Velcro loops at the bottom position.
2. With the main tube chambers deflated, insert each set into the outer cover, making sure the valves are facing inwards. Make sure the large Velcro closed ends of the tube sleeves are placed in the stern end of the kayak. Align the Velcro squares on the outer side of the tube sleeves with the Velcro squares of the inner side walls of the outer cover. Additionally, be sure to connect the large Velcro squares at each end of the tube sleeves.

**See Figure 2.**



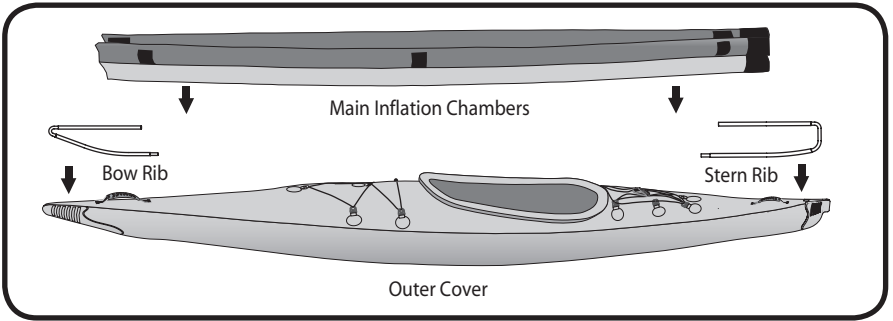


Figure 2

### 3.2 Set Up

1. Familiarize yourself with the different assembly parts.
  - a. All of the assembly poles have a number marked on them at one end.
  - b. The Front Thwart or “air bag” has two webbing sleeves stitched on the sides. The front end of the thwart (this is the portion that will face the bow of the kayak) is smaller than the back end (the portion that you will brace your feet against).
  - c. The Rear Thwart or “air bag” is overall larger than the Front Thwart. The front end of the thwart (this is the end that will face the stern of the kayak) is smaller than the back end (the portion that will be directly behind your seat).
2. Assemble the frame poles by interlocking the shock corded ends together.
3. Install the Foam Floor. The Foam floor should be placed with the wider end at the cockpit. You can use the front thwart alignment line, printed on the inside of the kayak, to align the front end of the floor. Make sure that the Velcro loop on the hull of the kayak comes up through the hole in the floor. **See Figure 3.**

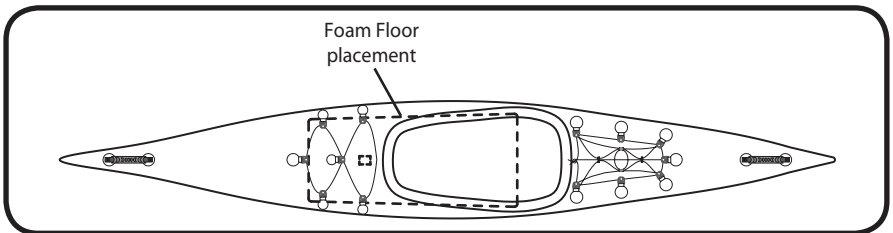


Figure 3

4. Once the poles are assembled and the floor is installed, begin by inserting pole #1 into the sleeve on the bottom of the front thwart (leave deflated) making sure that the numbered end of the pole is at the back end of the Front Thwart. **See Figure 4.**

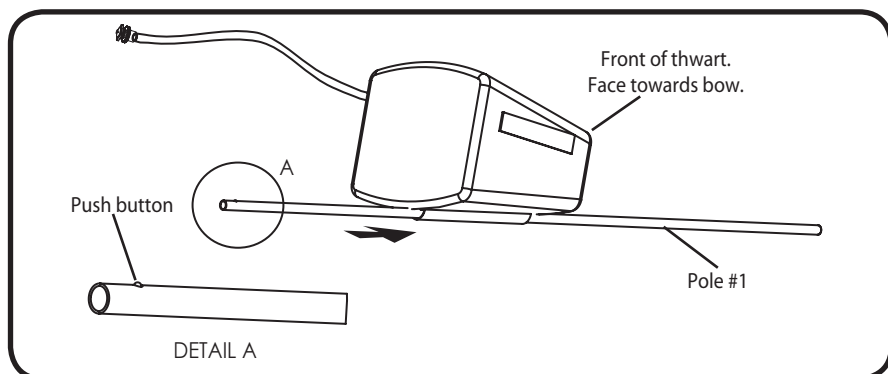


Figure 4

5. Install pole #1 into the front end of the kayak connecting it with the bottom portion of the Bow Rib. The pole should be placed on top of the foam floor and the numbered end of the pole should be at the cockpit of the kayak. **See Figure 5.**

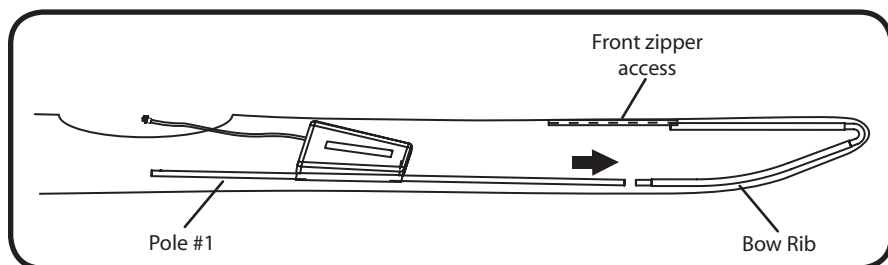


Figure 5

- a. Tip: Connect pole #1 with the Bow Rib through the zipper on the deck at the front end of the kayak.
6. Insert pole #2 into the sleeve on the bottom of the rear thwart (leave deflated) making sure that the numbered end of the pole is at the back end of the Rear Thwart. **See Figure 6.**

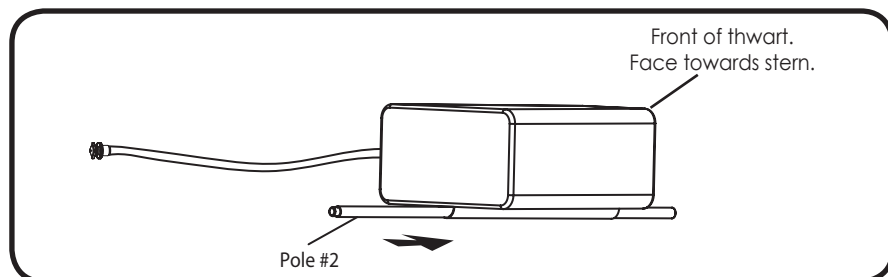


Figure 6

7. Install pole #2 into the rear end of the kayak, connecting it with the bottom portion of the Stern Rib. The pole should be on top of the foam floor and the numbered end of the pole should be at the cockpit of the kayak. **See Figure 7.**

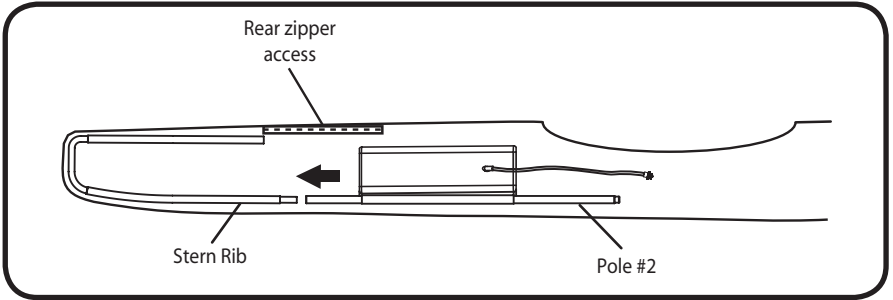


Figure 7

- a. Tip: Connect pole #2 with the Stern Rib through the zipper on the deck at the rear end of the kayak.
8. Slide Locking Sleeve #3 over the end of pole #2 (at the cockpit position), making sure the hole for the snap button is facing the free end of pole #2. **See Figure 8.**

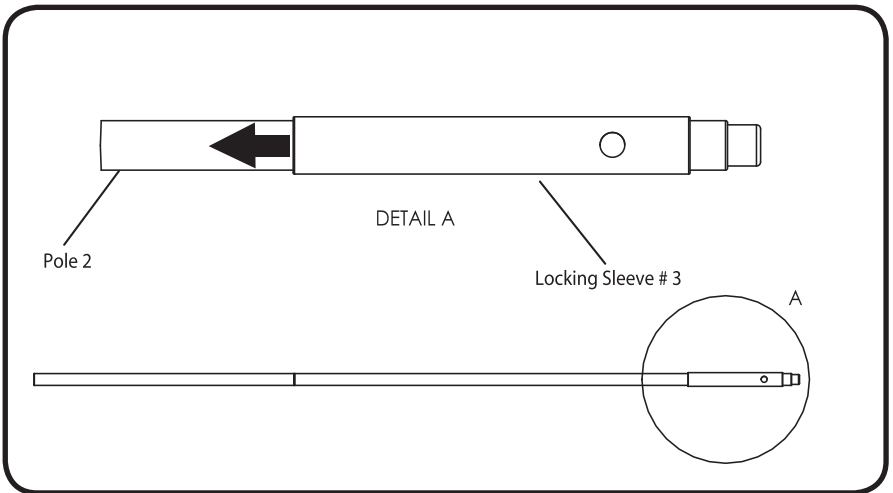


Figure 8

9. Connect poles #1 and #2 together by lifting each pole upwards and joining the ends together and then pushing them downwards, this will require a little force and will push the Bow and Stern Ribs into place, stretching the kayak out to its full length. Immediately after poles #1 and #2 are connected, slide Locking Sleeve #3 over pole #1 until the connection point of

poles #1 and #2 is in the middle of Locking Sleeve #3. Align the hole on Locking Sleeve #3 with the push button located on pole # 1 and snap into place. **Warning: Make sure to snap Locking Sleeve #3 into place IMMEDIATELY to prevent poles #1 and #2 from springing upwards and causing any injury to you or the kayak.** Align and secure the completed pole assembly using the two Velcro loops on the floor of the kayak; the front loop should be showing through the small hole in the foam floor, this will also insure that your floor is in alignment. See Figures 9 and 10.

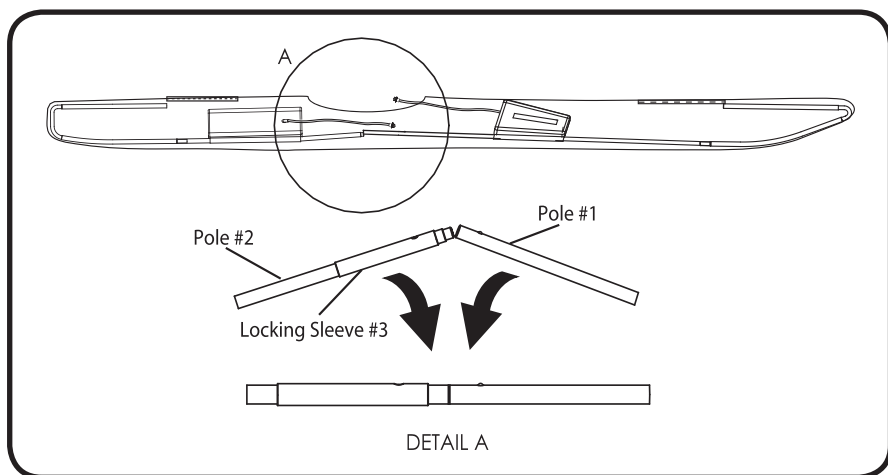


Figure 9

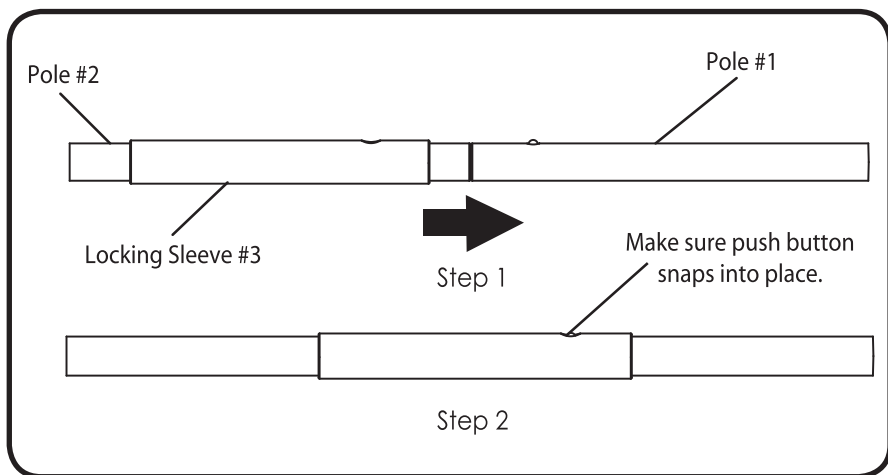


Figure 10

10. Moving to one side of the kayak, you will install poles #4 and #5. **See Figure 11.** Slide pole #4 into the Velcro guide loops along the main inflation chambers at the side of the kayak. The two loops you will need for this pole are at the front end of the kayak, along the side, and at the midpoint, also along the side.

- a. Tip: Access the front guide loop through the front deck zipper.

Slide pole #5 along the main inflation chambers towards the rear of the kayak and secure it into place using the rear Velcro guide loop that is located along the side of the kayak at the stern of the boat.

- a. Tip: Access the rear guide loop through the rear deck zipper.

After positioning poles #4 and #5, connect the two ends, making sure that the holes on the ends of each pole are aligned, and lock them together with the spring snap at the end of pole #5. **See Figure 11.**

Once poles #4 and #5 are interlocked, align the joining seam of the two poles with the arrows located on the tube sleeves in the cockpit area.

- b. Tip: The alignment arrows on the tube sleeves are meant as a guideline for aligning your poles. Do not be concerned if they are not perfectly aligned after the kayak has been inflated.

11. Move to the other side of the kayak and repeat step #10. **See Figure 11.**

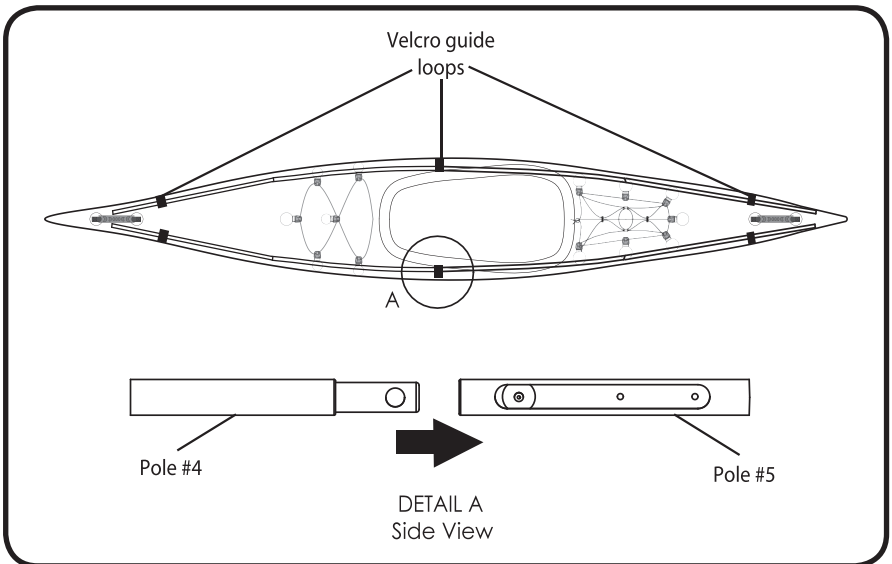


Figure 11

12. Slide pole #6 into place by inserting it into the sleeve that runs along the underside of the front deck. Slide pole #6 through this sleeve and connect it with the top portion of the bow rib. See Figure 12.

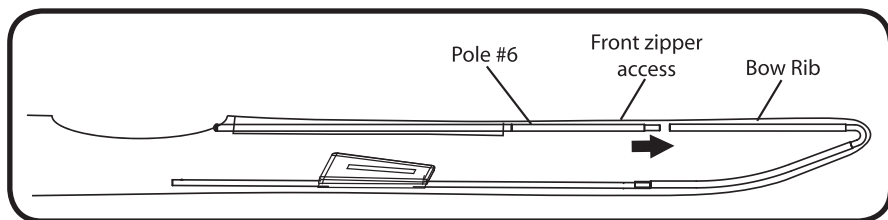


Figure 12

- a. Tip: Access the top portion of the bow rib to connect pole #6 by using the front deck zipper.
13. Once all of the poles have been installed into the kayak, align the front and rear thwarts with the alignment lines printed on the interior floor of the kayak.
  - a. Tip: The front thwart alignment line is meant as a starting point for inflation. You may find that you want to move it forward or backward to adjust for proper foot bracing and comfort. It is recommended that you inflate it at the alignment line for your first time, and then you can deflate and adjust the thwart as needed to fit your height and preference. Once you determine the position that best suites you, you can mark the position of the front thwart with a permanent marker for future setups.
14. Attach the seat to the buckles located inside the cockpit area (the cockpit buckles are attached to the underside of the deck of the kayak). There are 4 buckles in the cockpit area, as well as on your seat. The large buckles on your seat attach to the larger buckles located at the front end of the cockpit and the small buckles on your seat attach to the smaller buckles at the rear of the cockpit.

### 3.3 Understanding Your Valves

1. The AirFusion kayak uses the standard Boston valves and the Advanced Elements Twistlok Valve. The following figures have details on how to operate these valves.

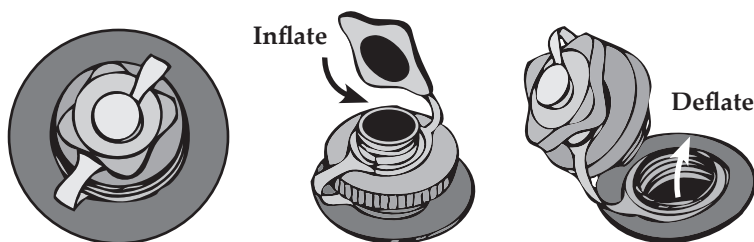


Figure 1. Inflate/Deflate Boston Valve

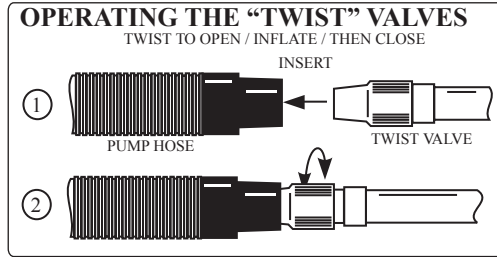
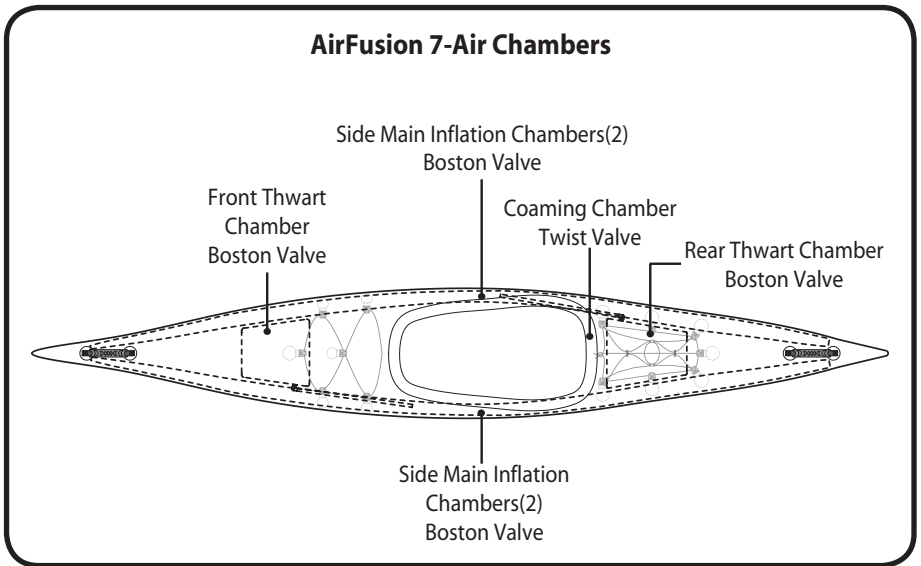


Figure 2. Inflate/Deflate Twist Valve

To begin inflating your kayak, you will need a **Bellows Foot Pump** or a **Double Action Hand Pump**. **Never use compressors, CO2 or compressed air as they may damage your kayak.**



### 3.4 Inflating

**IMPORTANT:** Before inflating, check to be sure that the kayak is completely assembled. Inflate your kayak in the following order. **Failure to follow these instructions may cause damage to your kayak. Do not over inflate.**

1. Locate the valves for the two bottom side chambers. Make sure the valve body is screwed in tightly. **See Figure 1.** Remove small cap and use the appropriate pump nozzle. If you own an Advanced Elements pump you should have a screw on valve adaptor; if you do not have this adaptor, you can obtain one by visiting our website at [www.advancedelements.com](http://www.advancedelements.com). This adaptor will attach to the valve; you must first press fit the adaptor to the valve and

then screw the adaptor down to secure it. Inflate the two bottom side chambers partially, approx 5 pumps.

2. Locate the valves for the two top side chambers. These valves operate the same as the bottom side chambers. Inflate the two chambers partially, approx 5 pumps.
3. Once you have partially inflated the main chambers, move to the rear thwart and inflate it until firm (2.0 psi **ONLY**). Do not over inflate! As you are inflating the rear thwart, make sure the bottom of the thwart is as even as possible with the floor of the kayak. Also, make sure the main chambers are remaining alongside the thwart and not pressing under the thwart.
4. Move to the front thwart and inflate it until firm (2.0 psi **ONLY**). **Do not over inflate!** As you are inflating the front thwart, follow the same guidelines as the rear thwart.
5. Once the thwarts are fully inflated and in position, return to the two bottom side main chambers and inflate each until firm (4.5 psi **ONLY**). **Do not over inflate!**
6. Move to the two top side main chambers and inflate each until firm (4.5 psi **ONLY**). **Do not over inflate!**
  - a. **Tip:** A good way to gauge if your kayak is fully inflated is to pick it up by the handle at one end and give it a good bounce. If it flexes quite a bit, or sags, it needs more air.
7. Inflate Cockpit Coaming (1.0 psi **ONLY**). **Do not over inflate! See Figure 2.**
8. Once all chambers are inflated, place the valves from the Main Inflation Chambers and the Rear Thwart behind the seat in the cockpit area. The valve for the Front Thwart can be placed on top of the top left Main Inflation Chamber, in-between the outer skin and tube.

### 3.5 Deflation and Break Down

1. Unscrew the valve bodies to the Main Inflation tubes and the Front and Rear Thwarts. **See Figure 1.**
2. Open Twist Valve on Coaming.
3. Once the chambers are deflated, you can use your pump to vacuum out any additional air for improved folding.
4. Remove Poles #4 and #5 from each side of the kayak, and collapse each pole by pulling apart and folding at the shock corded ends.
5. Remove Pole #6 from the deck sleeve and collapse by pulling apart and folding at the shock corded end.
6. Take hold of Locking Sleeve #3 and depress the push button on Pole #1. Slide Locking Sleeve #3 onto Pole #2. **CAUTION: Keep your hands on Poles # 1 and #2 to keep them from springing upwards and causing any injury to you or the kayak.**
7. Disconnect Poles #1 and #2 and pull Pole #2 out of the kayak. Pull Locking Sleeve #3 off of the end of Pole #2 and remove Pole #2 from the Rear Thwart Sleeve.
8. Pull Pole #1 out of the kayak and remove it from the Front Thwart Sleeve.
  - a. **Tip:** To keep from losing Locking Sleeve #3, slide it onto Pole #1 and snap it into place over the push button.
9. Collapse each pole by pulling apart and folding at the shock corded ends.

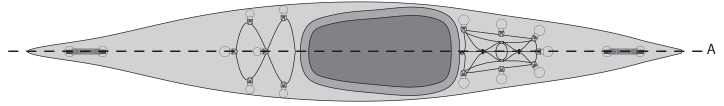
**NOTE:** Leave Bow and Stern Ribs in place inside of the kayak.
10. Remove the foam floor.



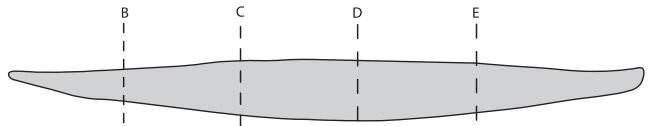
### 3.6 Folding

**NOTICE:** Reverse your pump to completely deflate all chambers.

1. Completely deflate all air chambers, remove the frame poles and thwarts, remove the seat, foam floor, and thoroughly dry out the kayak.
2. Fold in half, down the center, lengthwise.



3. Fold the bow inward at the end point of the Bow Rib. You should be able to feel the end of the Bow Rib through the outer cover.



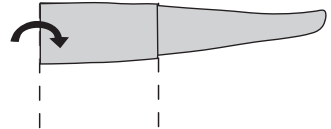
4. Fold over at the tip of the bow; this will bring the folded edge of the kayak to the middle of the cockpit.



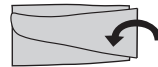
5. Fold over once more at the inner folded edge.



6. Fold the stern end inward.



7. Place into duffle bag.



8. Put remaining parts, Poles, Seat, Thwarts, and Foam Floor, into duffle bag.

## 4. GUIDELINES FOR USAGE

Paddlesports can be very dangerous and physically demanding. The user of this product should understand that participation in paddlesports may involve serious injury or death. Observe the following safety standards whenever using this product. The user of this product acknowledges both an understanding and an assumption of the risk involved in paddlesports.

After you have inflated your kayak and before you put it in the water, inspect your equipment for obvious signs of wear or failure. Review local rules and regulations and read again the “CAUTION” statement.

Most areas have local laws and regulations about the use and equipment of small boats. Usually a phone call to the local authorities will provide you with the needed information. Some areas may require that you register and display a registration number on the front of your kayak. Once you have been issued a number, it is best to affix it to the kayak by printing it on the material with a permanent ink marker. If you are required to display a sticker or vinyl letters, an inflatable boat ID kit can be purchased at most marine stores.

Your kayak is designed to be paddled with a double bladed kayak paddle. Paddle with short and even strokes. Keep the blade close to the kayak and the paddle almost vertical. Pull with your lower hand and push with your upper hand. To reduce the amount of swaying at the front of the kayak, ease off on the force of your stroke. Paddling with a backward stroke can sometimes offer quick maneuverability.

**ALWAYS** practice safety and take the time to learn about the area where you are paddling. Get official information about the local tides and currents before paddling there. Be careful that you do not over estimate your strength, your endurance or your skill. Be careful never to underestimate weather conditions. Be aware of the dangers before you begin. Be aware of your skill level. Be sure you understand and accept the risk of these dangers. There are many paddling clubs all over the world. These can be a great source of information on places to paddle, people to paddle with and most importantly, continued safety practices.

## 5. PROPER CARE AND STORAGE

The easiest method for drying out your kayak is to lay it out to air dry while toweling out any excess water from the inside. Although you should be able to completely dry your kayak without removing the Main Inflation Chambers and Bow and Stern Ribs: Follow these steps if you need to remove excess water.

1. Remove the Main Inflation Chambers by separating them from the Velcro patches located on the interior wall of the outer cover. Pull the Main Inflation Chambers out of the outer cover through the cockpit.

2. Remove the Bow and Stern Ribs by first undoing the Velcro retention loops located on the interior hull of the kayak. You can then slide the ribs out through the deck zippers or through the cockpit.
3. Once these parts are removed you can hose down and rinse the Main Inflation tube covers and the outer cover of the kayak and wash out or remove any loose gravel or debris.
4. Wipe down all components with a towel and lay out to dry.
5. Reassemble the main components of the kayak by using the following steps and pack away.
  - a. Place the Bow and Stern Ribs into each end of the kayak and secure the bottom of them into place using the Velcro loops at the bottom position.
  - b. With the main tube chambers deflated, insert each set into the outer skin, making sure the valves are facing inwards. Make sure the large Velcro closed ends of the tube sleeves are placed in the stern end of the kayak. Align the Velcro squares on the outer side of the tube sleeves with the Velcro squares of the inner side walls of the outer skin. Additionally, be sure to connect the large Velcro squares at each end of the tube sleeves.

## 6. REPAIRS

All kayaks come with a repair kit that includes glue and several patches. This should remain with the kayak in the event that you may need it. If service is required for your kayak, please call **866-262-9076** for assistance.

### 6.1 Repairing Small Punctures and Cuts

1. Cut a rounded patch at least  $\frac{1}{4}$ " or  $\frac{1}{2}$ " larger than the hole or cut.
2. Clean the area where the patch will be placed with water and/or mild soap.
3. Make sure all surfaces are dry.
4. In a well ventilated area, spread a thin layer of glue on both the patch and on the damaged area. Let it sit for three to five minutes or until tacky.

### 6.2 Repairing Pinholes

1. Inflate the PVC tube. Locate the pinhole by sponging soapy water over the tube until you see air bubbles. Mark the location of the pinhole.
2. Deflate the tube and dry the affected area. Apply a drop of glue to the pinhole.
3. Allow glue to dry completely.
4. Do not inflate the kayak for at least twelve hours.

# 7. TROUBLESHOOTING

**PROBLEM**

**SOLUTION**

**Does not hold air while inflating.**

Check the Boston Valve and make sure that it is tightly screwed into the valve body. See Figure 1 in section 3.3 of this manual.

**The kayak is sagging or under inflated.**

Be sure that the right pump is being used. You need a bellows foot pump or a double action hand pump. A 12-V electric does not supply enough pressure to fully inflate the kayak. The 12-V can be used to partially inflate the kayak but one of the other pumps is needed to top it off.

**The kayak will not hold full pressure for more than a couple of hours.**

Make sure that the valve is screwed tightly into the valve body; refer to Figure 1 in section 3.3 of this manual.

**Kayak still loses air.**

If you have checked all the previous possible reasons for the kayak losing air, then there may be a pinhole or a puncture somewhere on the tube. Pull tube from outer covers. Inflate. If you cannot see or hear where a leak may be, take a clean rag with soapy water and begin rubbing the tube. If a hole is present, bubbles will continually form. Repair using repair kit. If it is a very small pinhole, a dab of the glue may be sufficient.

**Water in the kayak.**

There will almost always be a little water in the kayak. One reason is the water drips off of the paddle and into the kayak. Another is some will puddle up on the deck and leak through the zipper. You can also get a spray skirt from our accessories list from a dealer. This will help keep the inside of the kayak dry as well as you.

**The kayak drifts to one side.**

A kayak will always head in the direction of your last stroke. The longer the kayak the less this is usually noticed. If it is drifting in the opposite direction, the kayak may not be inflated properly or the center poles and Bow and Stern Ribs may not be aligned. First, make sure the center frame poles and Bow and Stern Ribs are aligned down the center of the kayak. Use the Velcro guide loops located on the floor of the kayak to keep the poles and ribs aligned. Secondly, refer to section 3.4 for proper inflation of the kayak.

# PADDLING NOTES:

It is always a good idea to keep notes of your paddling experiences. Your notes can serve as a reminder of what to look out for, as well as what gear to bring along, and what conditions are like.

DATE	TIME	LOCATION	NOTES

NOTES:

## NOTES:

NOTES:



**Note:** If your state requires this document of licensing your boat, please contact Advanced Elements Customer Service Department for completion, or for more information.

**MANUFACTURER’S STATEMENT OF ORIGIN**  
**FOR A VESSEL SOLD IN THE STATE OF \_\_\_\_\_**

The undersigned manufacturer hereby certifies that the new boat described below, the property of said manufacturer, has been transferred this \_\_\_\_\_ day of \_\_\_\_\_, 20\_\_\_\_ on

Invoice# \_\_\_\_\_ to:  
Owner’s/Dealer’s Name \_\_\_\_\_  
Address \_\_\_\_\_  
City, State, Zip \_\_\_\_\_

Model Name \_\_\_\_\_ Model Year \_\_\_\_\_ Manufacturer’s Hull Identification# \_\_\_\_\_  
○ AirFusion™ Kayak (AE1040) \_\_\_\_\_ HIN# \_\_\_\_\_

Type: Kayak \_\_\_\_\_ Hull Material: PVC/Polyester \_\_\_\_\_  
Length Overall: 13’ \_\_\_\_\_ Beam: 25” \_\_\_\_\_

U. S. Coast Guard Capacity Plate Information (where applicable):  
Maximum persons capacity in whole persons: 235 lbs (107 kg)  
Maximum weight capacity (persons & gear): 300 lbs (136 kg)

The manufacturer further certifies that this was the first transfer of such new boat and that all information given herein is true and accurate to the best of their knowledge



P.O. Box 5128 Concord, CA 94524

Signature \_\_\_\_\_

**FIRST ASSIGNMENT**

FOR VALUE RECEIVED, in the amount of \$ \_\_\_\_\_,

the undersigned hereby transfers the Certificate of Origin and the boat described therein to \_\_\_\_\_

Address \_\_\_\_\_

and certifies that the boat is new and has not been registered in this or any other state; Advanced Elements, Inc. also warrants the title of said boat at time of delivery, subject only to the liens and encumbrances as set out below:

Amount of Lien	Date	To whom Due	Address
_____	_____	_____	_____

Dates \_\_\_\_\_ 20\_\_\_\_, at \_\_\_\_\_  
By: \_\_\_\_\_

Transferrer (Firm name) Sign Here \_\_\_\_\_

Before me personally appeared \_\_\_\_\_ who by me being duty sworn under oath says the statements set forth above are true and correct. Subscribed and sworn to me before this \_\_\_\_\_ day of \_\_\_\_\_, 20\_\_\_\_.

\_\_\_\_\_, Notary Public \_\_\_\_\_ Date commission expires \_\_\_\_\_

(SEAL)

# ***Declaration of Conformity***

(according to ISO/IEC Guide 22 and EN 45014)

**Manufacturer's Name:** Advanced Elements, Inc.

**Manufacturer's Address:** P.O. Box 5128  
Concord, CA 94524

*declares, that the product:*

**Product Name:** AirFusion™ Kayak

**Model Number (s):** AE1040

to which this declaration relates, **meets the essential health and safety requirements** and is in conformity with the relevant EU Directives listed below:

General Product Safety Directive

using the relevant section of the following EU standards and other normative documents:

EN / UNI 6185-1 : 2006

ABYC H28-76

Date: January 1, 2010

A handwritten signature in black ink, appearing to read 'g. haller'.

Clay Haller, President

This product complies with European directives for recreational vessels as published by the International Organization for Standardization (ISO).

## LIMITED WARRANTY

Advanced Elements, Inc. warrants this product to be free from defects in material or workmanship for a period of one year from the date of purchase. Products that prove to be defective under conditions of normal and proper use during the warranty period because of defective workmanship or faulty material will be replaced or repaired without charge. For warranty service, contact Advanced Elements, Inc.

Advanced Elements, Inc shall inspect all warranty claims and in the event of a defect, repair or replace the defective part or entire item, at its option. The purchaser must, before return of a defective product, obtain from Advanced Elements, Inc, a return authorization number and return center address. Please write or call as listed below. Once an authorization number is obtained, the purchaser must ship the product, POSTAGE PREPAID, to Advanced Elements, Inc for repair. Do not ship to P.O. Box address as it may be sent back.

This warranty does NOT cover:

Products used for rental, for hire or in professionally guided tours and other uses not considered normal recreational purposes; and punctures, cuts and abrasions sustained in normal use; and items involved in accidents; and items damaged in white water mishaps, and other unreasonable uses or improper storage.

Advanced Elements, Inc shall within (30) days from receipt of an authorized return from purchaser, perform its responsibilities in conformance with this warranty.

THERE ARE NO WARRANTIES WHICH EXTEND BEYOND THE DESCRIPTION OF THE FACE HEREOF. ADVANCED ELEMENTS SHALL NOT BE HELD LIABLE FOR INCIDENTAL AND CONSEQUENTIAL DAMAGES.

THIS WARRANTY IS INCLUSIVE IN LIEU OF ALL OTHER WARRANTIES.

This warranty gives you specific legal rights, and you may also have other rights that vary from state to state.

Advanced Elements, Inc.

P.O. Box 5128, Concord, CA 94524

Toll Free - 866-262-9076 - email [info@advancedelements.com](mailto:info@advancedelements.com) - [www.advancedelements.com](http://www.advancedelements.com)

(cut along line)

### ADVANCED ELEMENTS WARRANTY REGISTRATION

(PLEASE TYPE OR PRINT CLEARLY)

Please complete and mail card to Advanced Elements within 10 days. It will register your product.

**Mail to: Advanced Elements, Inc.**

**P.O. Box 5128, Concord, CA 94524**

**Attn: Warranty Department**

Owner's Name \_\_\_\_\_

Address \_\_\_\_\_ Apt. \_\_\_\_\_

City \_\_\_\_\_ State \_\_\_\_\_ Zip \_\_\_\_\_

Model \_\_\_\_\_ HULL (12 characters) # \_\_\_\_\_

Purchase Date \_\_\_\_\_

Store Name \_\_\_\_\_

Store Address \_\_\_\_\_

City \_\_\_\_\_ State \_\_\_\_\_ Zip \_\_\_\_\_

*Thank you for responding to the following.....*

1. How did you first learn of this product?

☐ Dealer    ☐ Friend    ☐ Magazine    ☐ Radio    ☐ TV    ☐ Catalog    ☐ Other

2. What most influenced your decision to purchase this product?

☐ Price    ☐ Features    ☐ Style    ☐ Quality    ☐ Other

## **IMPORTANT!**

**PLEASE READ THIS MANUAL CAREFULLY BEFORE PROCEEDING.  
AFTER READING THIS MANUAL, SAVE THESE INSTRUCTIONS  
FOR FUTURE REFERENCE.**

**If you would like a catalog of our latest products please  
visit our website at  
[www.advancedelements.com](http://www.advancedelements.com)  
or call Toll Free 866-262-9076**

**PLEASE COMPLETE THE OTHER SIDE OF THIS  
WARRANTY REGISTRATION CARD AND RETURN TO ADVANCED ELEMENTS, INC.**

PLACE  
STAMP  
HERE



P.O. Box 5128  
Concord, CA 94524  
1-866-262-9076  
[www.advancedelements.com](http://www.advancedelements.com)  
Email: [info@advancedelements.com](mailto:info@advancedelements.com)